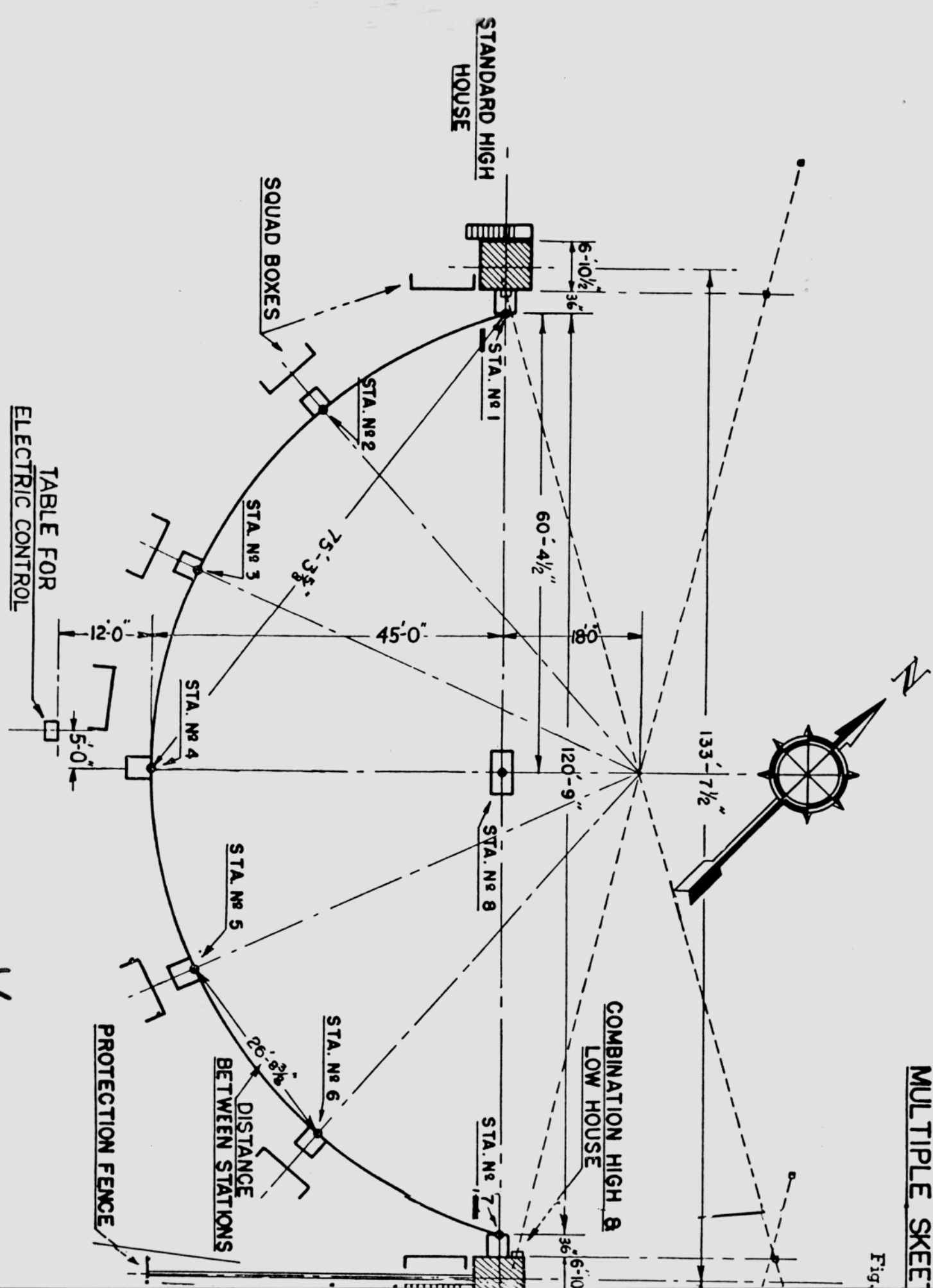


MULTIPLE SKEE

Fig.



STANDARD HIGH HOUSE

SQUAD BOXES

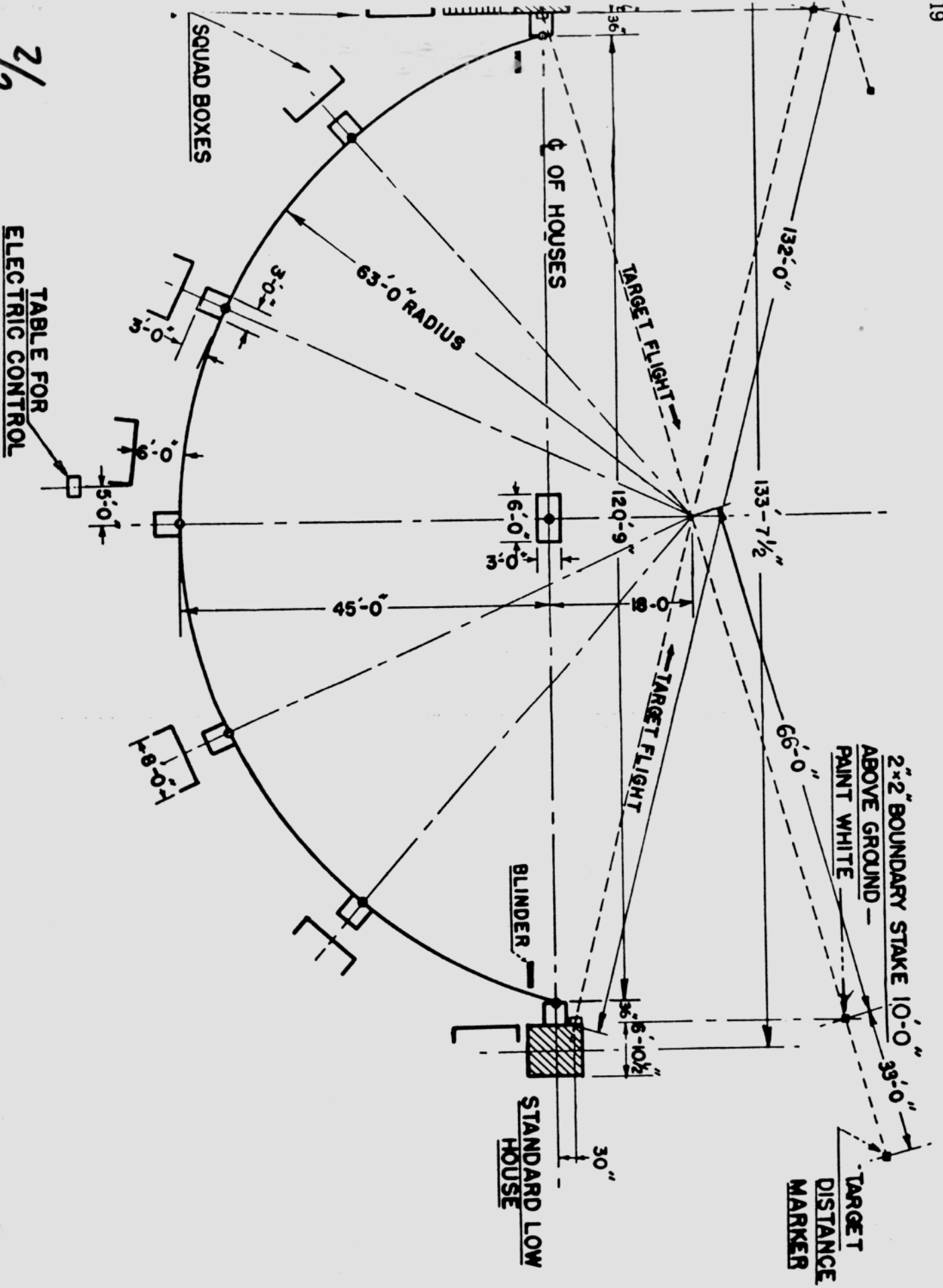
TABLE FOR ELECTRIC CONTROL

PROTECTION FENCE

COMBINATION HIGH B LOW HOUSE

DISTANCE BETWEEN STATIONS

1/2



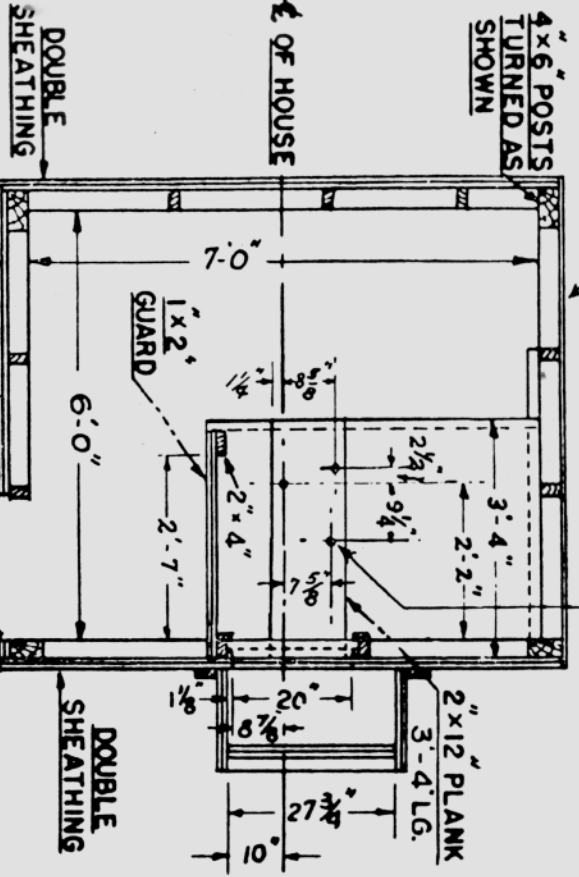
2/2

3-1/2" HOLES FOR TRAP BASE BOLTS
INSERT BOLTS FROM BOTTOM SIDE

SINGLE SHEATHING

4x6 POSTS
TURNED AS
SHOWN

OF HOUSE



UPPER FLOOR
PLAN

FENCE
(SEE DETAIL)

2'-6"

DOUBLE SHEATHED DOOR
2'-0" x 6'-0"

DOUBLE SHEATHING

2x12 PLANK
3-4 LG.

1x2 GUARD

2'-7"

2'-4"

2'-2"

27 3/4"

10"

7'-0"

6'-0"

2'-7"

2'-4"

2'-2"

27 3/4"

10"

Combination High-Low Trap House

Multiple Skeet Fields
for
MATERIAL LIST

LUMBER (Except Stairs and Fence)

No. Req'd.	Size	Description
4	4" x 6"	Corner posts.
1	2" x 12"	High house trap plank (Hardwood).
1	2" x 12"	Low house trap plank. (Hardwood).
1	2" x 4"	Sill for joists.
5	2" x 6"	Floor joists.
1	2" x 8"	Slide doors and side guard cleats.
2	2" x 6"	Sills.
4	2" x 4"	Blinder frames.
1	2" x 4"	Rafters.
5	2" x 4"	Trim.
2	2" x 4"	Top plate.
2	2" x 4"	Studs—(high house).
3	2" x 4"	Studs—(low house).
9	2" x 4"	Barricade upright.
2	2" x 4"	Bracing.
2	2" x 4"	Slide door uprights.
7	2" x 2"	Barricade strips.
1	1" x 2"	Cleats.
1	2" x 4"	Baffle doors and side guards.
2	1" x 12"	Side guard braces.
2	1" x 12"	Slide door guides.
4	1" x 3"	Slide door guide strips.
4	1" x 1 3/8"	Flooring for high trap table.
14	1" x 6"	Flooring for high house.
14	1" x 8"	Roof sheathing.
70	1" x 8"	Wall sheathing and doors.
STAIR LUMBER		
1	4" x 4"	Stair post.
2	2" x 10"	Stair runners.
3	2" x 10"	Stair treads.
1	2" x 10"	Landing floor.
1	2" x 6"	Landing joists.
1	2" x 4"	Support bracket.
1	2" x 6"	Support bracket header.
1	2" x 4"	Railing and rail posts.
2	2" x 4"	Tread cleats.
2	2" x 10"	Tread cleats.
MISCELLANEOUS MATERIAL		
1	Req'd.	Roll of rubberoid roofing.
2	2	Pairs of strap hinges for doors.
2	2	Pairs of 2" x 4" butt hinges for baffle doors.
4	4	Small hooks with screw eyes for baffle doors.
2	2	Door hasps.
8	8	Feet screen wire 3'-0" wide for blinders.
1	1	Gallon asphalt paint.
4	4	Anchor bolts 3/4" x 14" with nuts and washers.
3	3	Sacks cement
1000	1000	Pounds sand
1200	1200	Pounds broken stone } or 3/4 yards concrete.

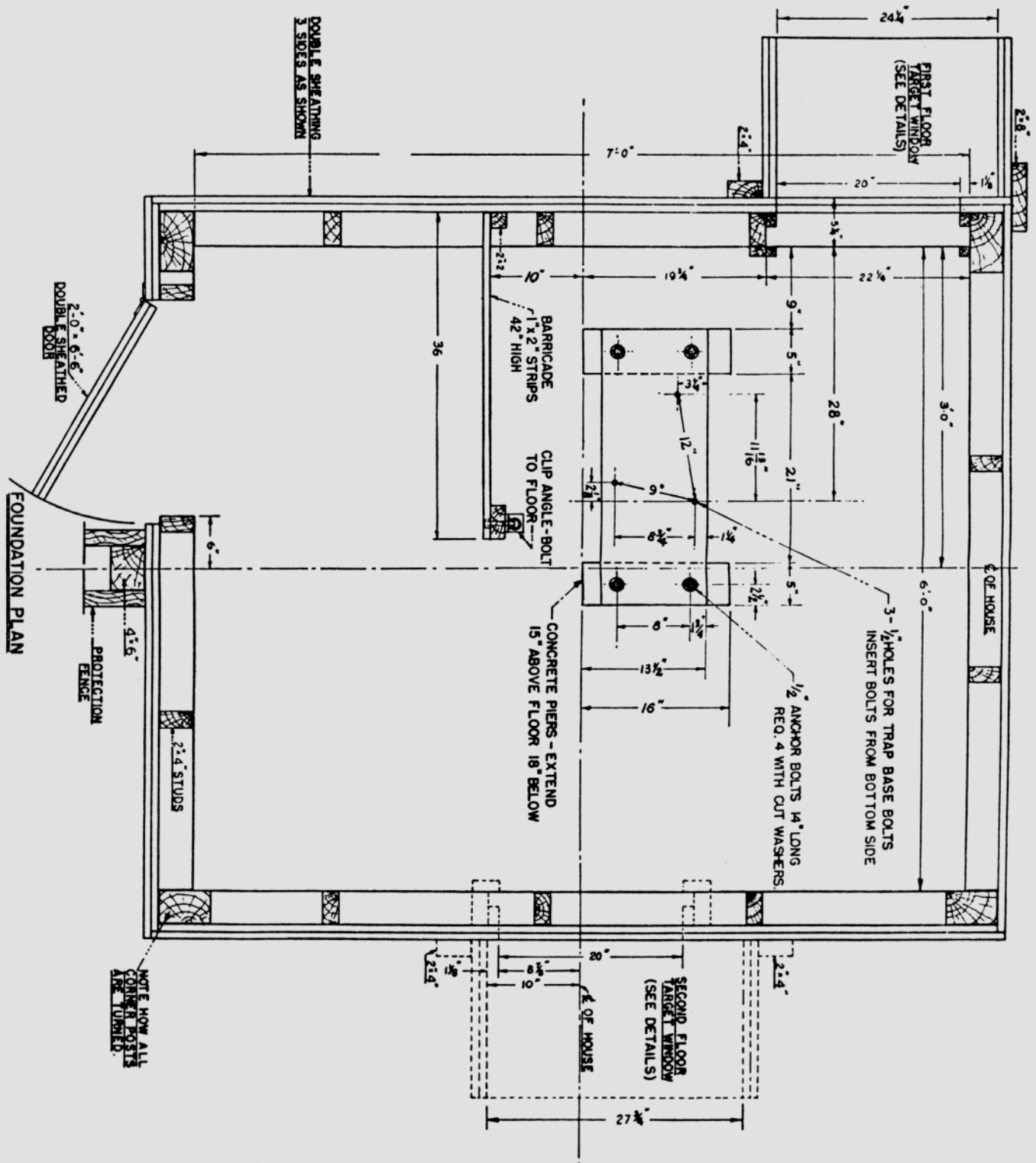


Fig. 21

FOUNDATION PLAN